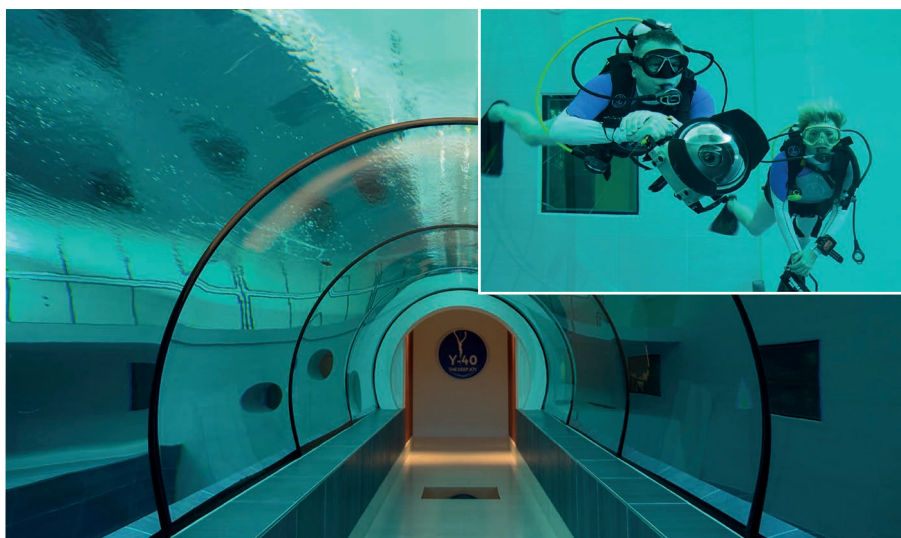


EXPLORING THE DIVING POOL Y40 **BREATHING AIR FROM BAUER**



The thermal water at tropical water temperatures offers a whole new diving experience. Nowhere else can divers plunge so easily up to 42 metres.

The attractive, sleek glass facade gives little indication of what lies behind it – namely the opportunity for divers, both scuba and free divers, to plunge up to an incredible 42 metres. This new world record for indoor diving pools is confirmed by the Guinness Book of Records plaque at the reception desk.

But Y40's unique diving experience offers more. At water temperatures of 32 to 34 degrees, divers can leave their neoprene at home. The thermal water comes out of the earth at this heat and is purified – retaining all its valuable minerals – before being fed into the diving pool. "Spa meets diving", so to speak!

The way to the pool and changing-rooms leads through a glass tunnel that passes right through the pool at a depth of around two metres. The décor features sophisticated ceramics and matte

brushed steel surfaces, clearly showing the level of investment that has gone into the complex. This applies above all to the divers' air supply.

Two high-powered, sound-proofed BAUER KOMPRESSOREN compressor systems deliver a total output of 1,400 litres of air to meet the high demand. To demonstrate to divers that clean, safe breathing air is a top priority at Y40, the pool operators made sure to obtain BAUER KOMPRESSOREN's own in-house PureAir System certificate. This certification specifies inspection of the filling chamber, use of original BAUER filter cartridges and the use of a B-SECURUS filter monitor, and also includes regular air testing.

Although Y40 has been open for barely five months, the crowds of visitors to the pool prove that its concept of uniting uncompromising quality with safety is bearing fruit and is thoroughly appreciated by divers.



The breathing air reference station is certified to the BAUER PureAir Standard and kept in scrupulous order – clean enough to eat off the floor!



B-DETECTION NON-STOP SAFETY

There can be no compromise where breathing air quality is concerned.

Correctly operated in the right environment, BAUER filter systems reliably provide pure breathing air. Yet serious operating errors and heavily contaminated ambient air can have harmful, or even fatal, consequences if tolerance limits are exceeded.



B-DETECTION BASIC – The stationary solution for safe, secure monitoring of breathing air.

Responding to this urgent state of affairs, BAUER KOMPRESSOREN developed a new range of online sensors that provide continuous and seamless monitoring of the air delivered by the compressor and ensure its compliance with the EN 12021* breathing air standard. While cheap or technically unsuitable sensors also deliver measured values, the analysis in their display may not tally with the actual levels of residual oil, CO, CO₂, O₂ and

moisture present in the breathing air they measure – resulting in a false sense of security for divers and system operators. BAUER KOMPRESSOREN has therefore selected the optimum sensor type in each case.

The new B-DETECTION series offers the ideal device for every purpose. Packaged in a compact, rugged plastic case and equipped with a rechargeable battery for wireless operation, B-DETECTION MOBILE is a universally usable device for mobile on-site monitoring wherever it is needed. The wall-mounted B-DETECTION BASIC is designed for stationary use and is technically largely identical to B-DETECTION MOBILE, with an additional direct link to the compressor control unit (B-CONTROL II/ B-CONTROL MICRO).

If tolerance values are exceeded, a fault message immediately appears in the compressor display. The top-of-the-line stationary B-DETECTION PLUS also features online measurement of residual oil levels. An important point to note is that all models can be retrofitted to existing BAUER compressors.

SERVICE CUSTOMER- FRIENDLY

Setting up a JUNIOR II for operation start-up, changing a filter cartridge and ordering the correct spare part – now these processes are shown in short explanatory vi-



Find the videos at

<http://www.bauer-kompressoren.de/en/service-support>

and on [youtube](#)



deos on the BAUER website and YouTube channel as service and support for customers.

The film clips are designed to complement operating instructions and clarify the information they contain, but also cater to many customers' changing behaviours in the 'age of the tablet'. In addition, operating instructions may no longer be readily available when they are required; customers then lose valuable time attempting to track down the information they need.

The "Maintenance" video now ensures customers can find what they want to know, explains the correct procedure for ordering spare parts and takes customers through the steps involved in setting up JUNIOR to VERTICUS 5 models before operation as well as changing oil and filters.

*Assuming systems are duly maintained and set up in accordance with the operating instructions / operating manual and assuming use of the BAUER AERO-GUARD where the CO₂ concentration in the intake air exceeds the values specified in the applicable breathing air standard.



The video library will be added to as needed; BAUER is happy to receive suggestions for further topics from partners and dealers! The videos are provided in German and English.

THE NEW 26.12-SP COMPACT PERFORMANCE

When planning a high-pressure compressor solution, many users face the challenge of juggling their need for high performance with the extremely limited space available for the installation.

The new GIB 26.12-SP high-pressure compressor from BAUER KOMPRESSOREN is the ideal solution. Available in two models with maximum operating pressure of

365 or 420 bar, its motor output of 250 kW reaches up to 10,300 l/min.

This outstanding performance is made possible by the combination of a screw compressor and four-stage high-pressure booster in a single compact unit. The integrated BAUER SP system uses a common control unit and common motor for both modules, whereas conventional solutions would require a combination of separate screw and high-pressure compressors or a pure compressor system. As a result, the systems are extremely easy to maintain, have a long service life and are quieter than comparable air-cooled compressors.

They are particularly suitable for continuous industrial and heavy-duty operation, even in temperature-critical environments.

The system is controlled by a BAUER B-CONTROL II control unit,

in a separate housing for maximum flexibility in installation. In addition to an array of surveillance and control functions, the unit also includes a soft start function for the 250 kW motor.

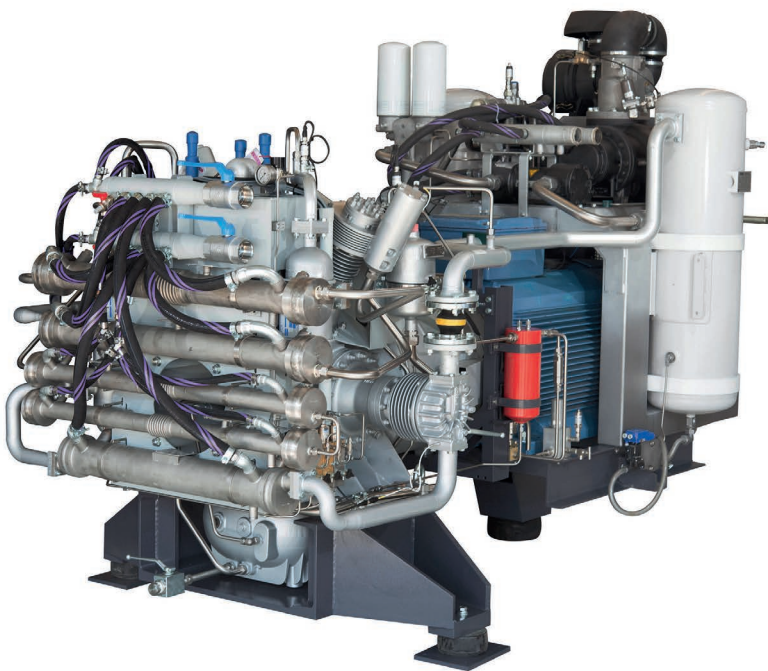
BAUER EXPANDS NEW PLANT IN THE USA



BAUER COMPRESSORS INC. has invested in extension.

2014 will go down in the history of the BAUER GROUP as the year of major changes – and as a milestone. Not only because the BAUER 2014 construction project in Geretsried to the south of Munich, where a new cutting-edge plant is being built, is approaching completion.

In addition, great things have been happening on the other side of the Atlantic. US company BAUER COMPRESSORS INC., the BAUER GROUP's second largest subsidiary, has invested an amazing 15 million dollars in extension and conversion works to bring their plant up to the state of the art – both visually and technologically. The aim was to significantly



Impressive performance and compact footprint are the strengths of the new GIB 26.12-SP, an efficient combination of a screw compressor and high-pressure booster.



Speaking in fluent English before a packed auditorium is no problem for Celina Bayat.

expand the plant's manufacturing capacity to reflect anticipated future growth.

Terry McAuliffe, Governor of Virginia, and Paul Fraim, Mayor of Norfolk, personally attended the inauguration ceremony on 30 October. The speeches given by these two dignitaries expressed their high regard for the financial commitment shown by the investments. In the USA, companies like BCI are among the few to invest in building up local production operations and thus make significant contributions to the development

of regional economies. As part of the future management generation at BAUER GROUP, Celina Bayat gave one of the opening speeches before the crowds of assembled guests. Her father, Philipp Bayat, Chairman of the Executive Board, could not conceal his pride, and Heinz Bauer, the second generation of the company's owners, enthusiastically applauded his grand-daughter.

In the tour of the plant that followed the ceremony, the delegation particularly admired the outstandingly eco-friendly powder-coating system – likewise state-of-the-art – and the new highly modern development and quality testing centre.

MONOPTEROS RUN BAUER ON THE RUN

Now in its eleventh year, the Monopteros Run in Munich is an exemplary combination of sport-

ing challenge and social commitment. On 28 September, the city's English Garden was the meeting-point for hundreds of running fans bent on showing their sporting prowess on one of the three running routes. The proceeds from donations and starting fees are collected by the charity Hilfswerk des Lions Club München Alt-Schwabing e.V. and used to fund sports projects for the disabled.



Sporting achievement and donations: The BAUER team hands over the donation cheque.

BAUER also made a financial contribution to the 2014 Monopteros Run, while staff from the company took up the sporting challenge. Most participants agreed, "A great event in a unique setting. We'll certainly be back in 2015!"

BAUER CALENDAR EXHIBITIONS

boot



| | |
|-------|---------------------|
| Place | Düsseldorf, Germany |
| Topic | Water sports |
| Date | 17–25 January 2015 |

PUBLISHING CREDITS

Published by
BAUER KOMPRESSOREN GmbH
Drygalski-Allee 37
81477 Munich
www.bauer-kompressoren.de

Editorial staff
Stefanie Frantz, Ralf Deichelmann

Layout, art editing and design
Annette Adam

Texts
Ralf Deichelmann, Jörg Denzer

Photos
BAUER COMPRESSORS INC.,
Ralf Deichelmann, Marlena-Diana Sajkiewicz